



Community Safety Strategy 2022-2025

Safer Basildon Partnership

“Working Together to make the
Borough a Safer Place”



BasildonCouncil

Contents

Introduction	3
The Safer Basildon Partnership	3
Purpose and Aims	4
Structure and Governance	4
Community Safety Ambitions	4
Partnership Priorities	5
Organising for Delivery	5
What success looks like	7
The Basildon Borough	7
Deprivation, Crime and Education	8
What do the people of Basildon think?	9
Finance and Resources	10
Outcomes and Key Deliverables	11
Glossary	12
The Safer Basildon Partnership Landscape	12

Introduction

This Community Safety Strategy 2022-2025 sets out the vision of the Safer Basildon Partnership and how it aims to work together, and with others, to deliver community safety outcomes for the residents of the Borough.

This strategy supports the work of Safer Basildon in understanding the patterns and trends relating to crime, disorder, anti-social behaviour and community safety issues in the Borough, enabling it to respond to its strategic priorities, ensuring focus and the appropriate allocation of resources to tackle the crime and anti-social behaviour having the most impact on our residents, visitors and businesses.

Collaborating with our partners is crucial in delivering our aims and this strategy sets out the range of responsibilities and governance by which we will ensure effective delivery.

Whilst this strategy outlines the priorities for the coming three years and it is not envisaged for these to vary significantly during this time, the partnership will undertake an annual strategic assessment, looking at data, patterns and trends to provide assurance that the strategy remains focused on the key issues and fit for purpose.

It is an ambitious strategy that confronts difficult issues that cannot be resolved by any single agency, including serious violence and knife crime, drugs and gangs, domestic abuse, drug and alcohol dependency, the criminal exploitation of children, young people and vulnerable adults, modern slavery and hate crime and the impact of these on our local communities, town centres and businesses.



The Safer Basildon Partnership

The Safer Basildon Partnership is jointly chaired by the Chief Executive of Basildon Borough Council and the Essex Police Chief Superintendent for the South of the County. They, alongside Essex County Council, The Probation Service, Essex Fire Service, Mid and South Essex Integrated Care Partnership, the NHS and Public Health are required by the Crime and Disorder Act 1998 to formulate a strategy to reduce crime and disorder, combat substance misuse and reduce re-offending in the local area, and to put in place a partnership plan for that area.

The partnership works with a range of other agencies, housing providers and voluntary sector organisations with a common interest in promoting community safety, and within other partnership arrangements to influence and shape services and resources into the borough. The extent of the partnership landscape and arrangements is shown at the end of this Strategy.

This Community Safety Strategy and the aims, ambitions and priorities contained within it will be used to form an Action Plan which is reviewed annually to ensure the partnership responds to any emerging trends and risks to combat the perception, threat, and consequences of crime and anti-social behaviour and the impact of these on our residents.

Purpose and Aims

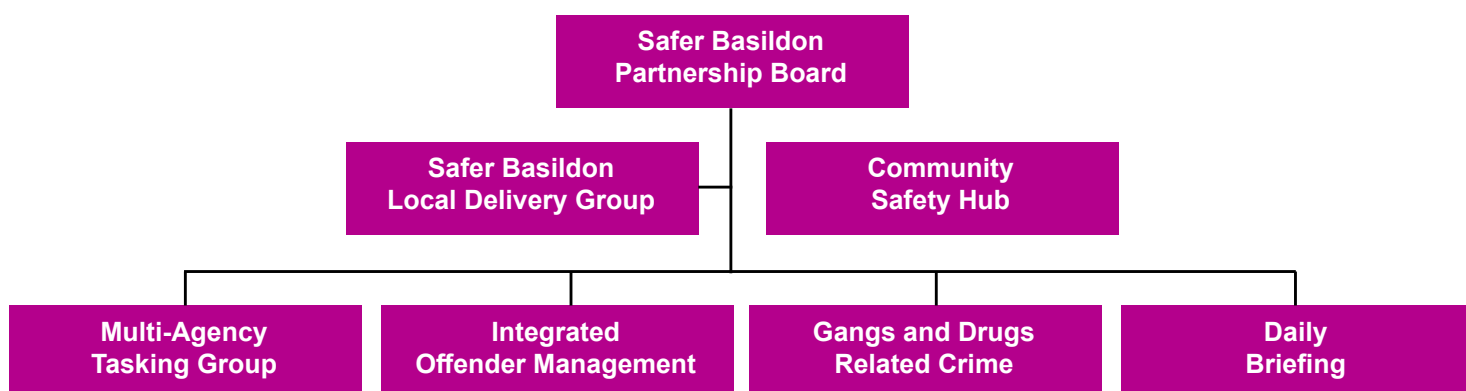
This Community Safety Strategy is the strategy of the Safer Basildon Partnership, it sets out our ambitions for the partnership and the borough and our strategic priorities. It details the outcomes we wish to achieve, the approach we will take to deliver them and resources. It outlines the range of the partnership's responsibilities and priorities and is an important tool to help focus our effort and resources on the right things.

This Community Safety Strategy informs other key strategies and plans of the council and our partners.

This Community Safety Strategy will be endorsed at Council as the crime and disorder reduction strategy for the Borough, as required by the Crime and Disorder Act 1998, and is subject to scrutiny by the relevant Council Committee.

Structure and Governance

The structure and governance arrangements are designed to offer a strong approach to partnership working, providing opportunities for agencies to work together to focus on established strategic priorities, outcomes and deliverables:



Community Safety Ambitions

People - We want Basildon to be a place where people feel safe, where local communities are aware of abuse, harm and exploitation and are confident to raise their concerns with local agencies, preventing themselves and each other from becoming victims of crime.

Place - We want Basildon to offer a high quality of life for all residents through attractive, liveable, accessible, and safe neighbourhoods and towns and will work together to protect geographical locations where crime and anti-social behaviour occurs, using all available tools and powers to create community reassurance and reduce the fear of crime.

This strategy aligns to the key themes and ambitions of the Borough's Corporate Plan 2021-2024 and those of the Essex Police, Fire and Crime Commissioner.

This Community Safety Strategy aligns to the Changing Futures Strategy, which similarly focuses on supporting adults in contact with the criminal justice system (whether as perpetrator, or victim, including those at risk of abuse and exploitation), as well as homelessness, mental ill-health and substance misuse issues.

Changing Futures in Essex is a major expansion and enhancement of Essex County Council's (ECC) existing approach to supporting people with multiple and complex needs. Fundamental to this, is our multi-disciplinary/multi-agency approach to supporting individuals, by forging strong links with partners from all sectors, including police, probation, housing, health and social care, thereby forming a cohesive and collaborative network of support around the individual.

Partnership Priorities

These priorities are based on the outcomes of public consultation, the annual strategic assessment of crime and anti-social behaviour, legislative requirements and the alignment of the strategy with other agencies priorities.

- Reducing the impact of drugs on the local community
- Protecting vulnerable people from abuse, harm and exploitation, in particular victims of domestic abuse and hate crime
- Preventing serious violence
- Improving the perception of community safety
- Focusing on early intervention, engagement and raising awareness
- Tackling re-offending through Integrated Offender Management

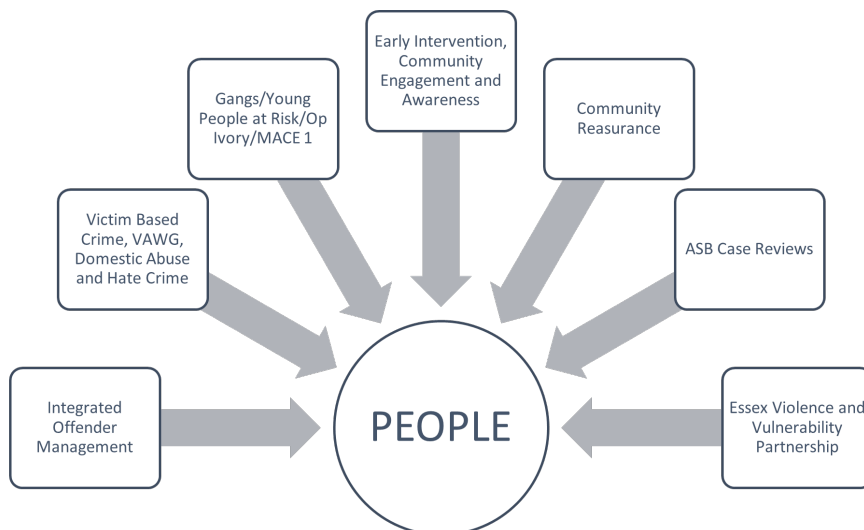
The Safer Basildon Partnership consider that focusing its efforts on these priorities will be the most effective use of resources:



Organising for Delivery

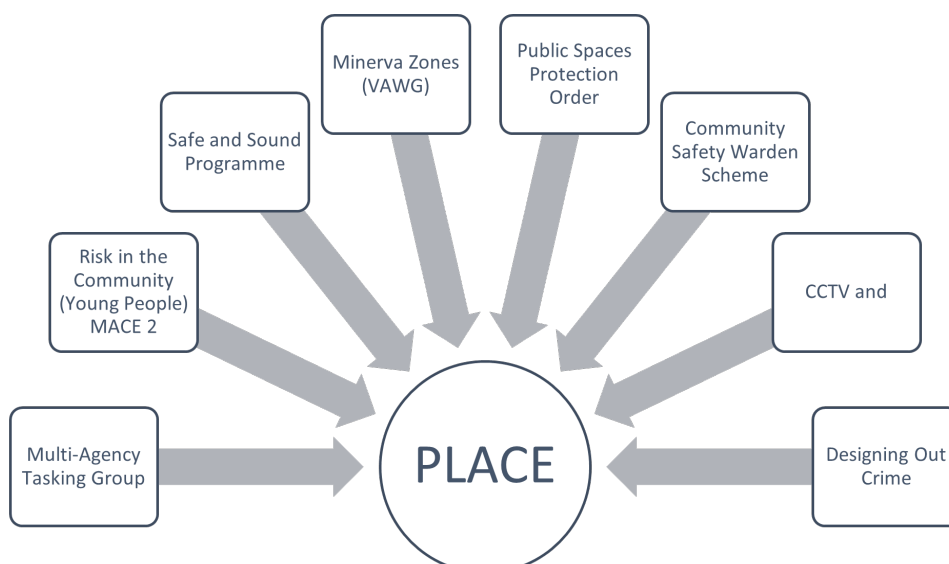
People

The partnership will adopt a range of approaches to focus its efforts on protecting people and safeguarding them from abuse, exploitation and harm, particularly young people who are at risk of becoming involved in gangs and drug related crime and those who are victims of domestic abuse, hate crime and violence against women and girls



Place

The partnership will work together to improve known hotspot locations and will provide a range of forums for partners to share information on areas of concern in respect of known and perceived risk in the community, in particular to reduce the impact of drugs:



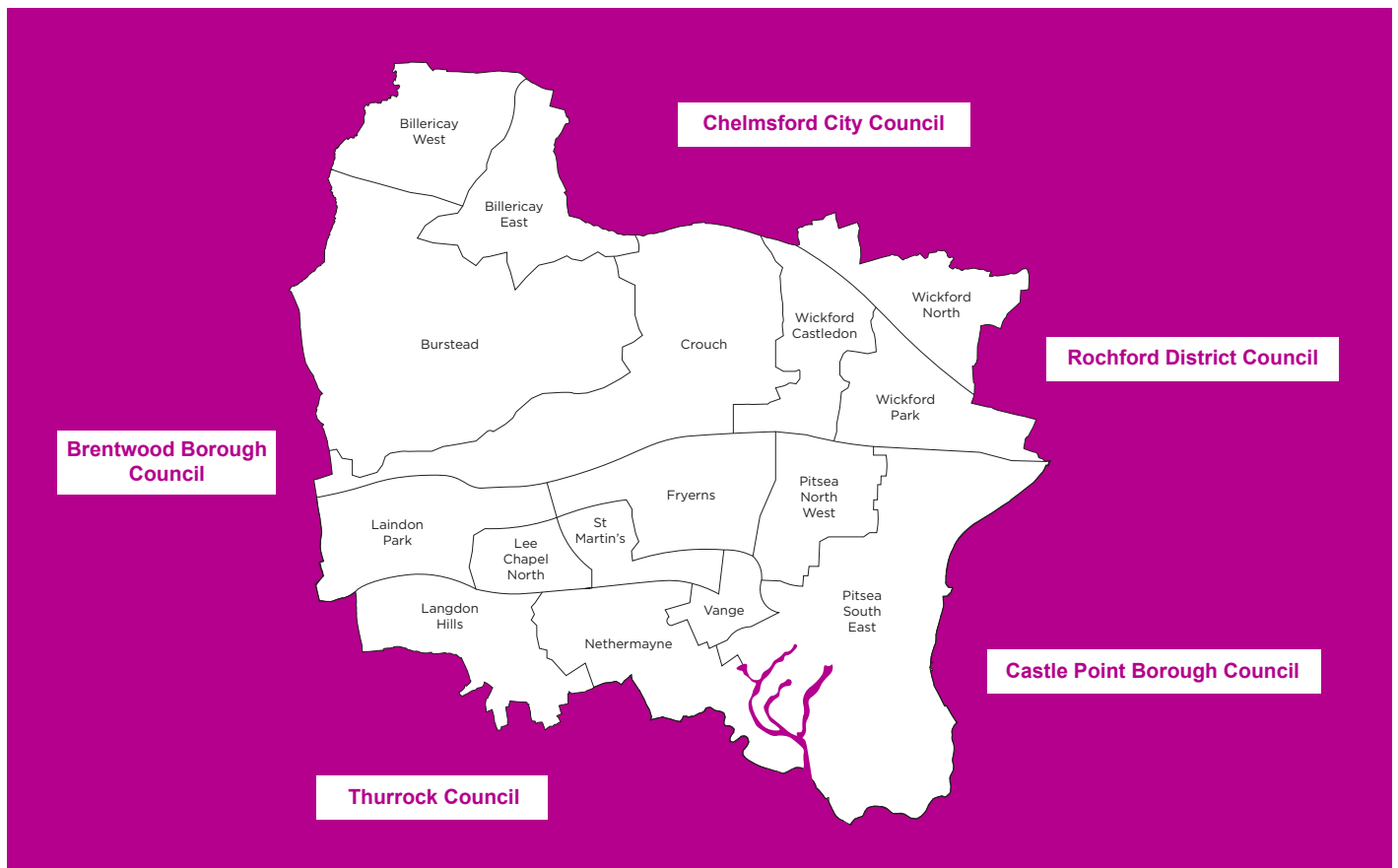


What success looks like

- Increase in perpetrators of drug related crimes being brought to justice
- Increase of people in drug and alcohol treatment services
- Increase in delivery of violence prevention initiatives in schools
- Increase confidence in reporting
- Reduction in knife crime
- Reduction in violence with injury
- Reduction in repeat domestic abuse incidents (victim and perpetrator measures)
- Reduction in hate crime incidents
- Reduction in the proportion of people reporting they feel unsafe at night, in particular young people.

The Basildon Borough

Basildon Borough was formed in 1974 and includes the towns of Basildon, Billericay, Laindon, Pitsea and Wickford. With a population of 187,600 it is the second largest Borough in Essex by population and covers 42.5 square miles with excellent road and rail links to London, the rest of the County and South-East England.



Deprivation, Crime and Education

Basildon is ranked 111 out of 317 local authorities and the third most deprived in Essex (1). The deprivation gap within the borough is substantial and has not improved since 2015; 11% of the borough's residents continue to live in England's 10% most deprived places, in contrast 14% of residents live in England's 10% wealthiest.

32% of the borough's neighbourhoods are in England's worst decile for crime and this has worsened significantly since 2015. The wards with the highest crime deprivation deciles are:

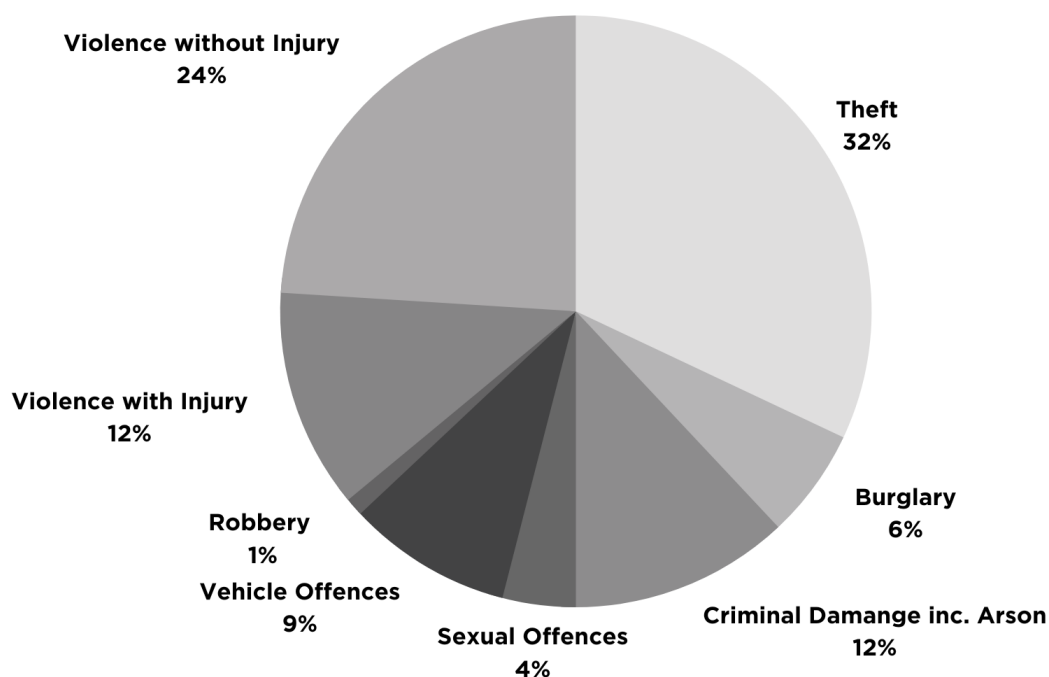
- Lee Chapel North
- St Martin's
- Vange
- Pitsea North-West
- Pitsea South-East

19% of the borough's neighbourhoods are in England's worst decile in terms of education, skills and training, although this has improved since 2015.

Basildon is the least deprived in terms of living environment, with a rank of 284, well above other local authorities, and health with a rank closer to the England average of 147.

In terms of crime levels across the County, Basildon appears to follow a similar pattern to other Essex local authorities with the distribution of crime appearing to be relatively equal (2).

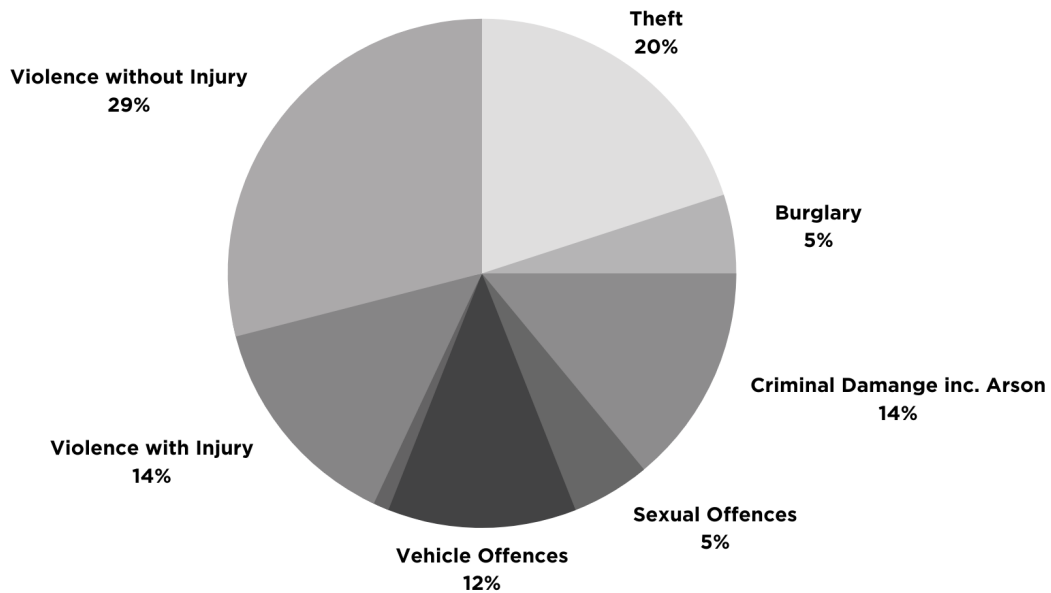
ESSEX POLICE FORCE LEVEL



(1) Source: 2019 Indices of Multiple Deprivation (IMD)

(2) Data taken from the Essex Police Crime tree – rolling 12 months to September 2021.

BASILDON LEVEL



What do the people of Basildon think?

A residents perception tracker survey conducted by the Council in 2021 asked people how safe they felt when they were outside during the day, outside during the night; and in their home, the responses varied widely:



The LGA benchmark for overall level of daytime safety is 93%

Overall 91% of residents feel safe during the day in their local neighbourhood

Residents of Fryerns and St Martin's Wards felt significantly less safe during the day than anywhere else in the Borough (82%)

67% responded that they feel safe outside at night, this proportion is notably below the LGA benchmark of 78%, and varies significantly across the Borough:



- Burstead (77%)
- Billericay West (75%)
- Langdon Hills (74%)

- Vange (51%)
- Lee Chapel North (51%)
- St Martins (60%)



Remarkably 97% of residents overall say they feel safe in their own homes. The only ward where levels of home-based safety fall below 90% is St Martins, where 81% feel their home is safe.

The Council's Our Place (phase 1) research undertaken in 2019 told us that 86% of respondents are very or fairly satisfied with where they live.

45% of the total respondents said they would like to see a reduction in levels of crime in their local area. Perceptions varied significantly across areas – in Pitsea Northwest, the level of concern was the highest (70%), whereas only 21% of respondents in Langdon Hills felt crime levels needed to be improved in their area.

A community safety public consultation in late 2021, to obtain residents views and experiences of crime and community safety issues, identified the top three priorities as being:



Finance and Resources

The Essex Police, Fire and Crime Commissioner is responsible for the funding of community safety services and so provides an annual Community Safety Grant to Safer Basildon which must be utilised to deliver activity aligning to the PFCC's priorities.

The partnership will continue to identify and access additional funding streams to improve community safety and enhance opportunities to increase the range of projects and initiatives being delivered.

The Council provides a community safety hub for key partners to work from. This collaborative space provides a secure environment for the council, the police, the probation service and domestic abuse services to share information more effectively, enabling a case management style approach for more complex cases to be discussed.



Outcomes and Key Deliverables

Priorities	Some of the ways we will get there
Preventing serious violence	<ul style="list-style-type: none"> • Deliver a Risk in the Community approach • Proactive and high visibility patrols in hotspot locations • Ensuring the use of available tools and powers • Increasing the number of diversionary activities for young people and improving their opportunities
Protecting vulnerable people from abuse, harm, and exploitation, in particular victims of domestic abuse and hate crime	<ul style="list-style-type: none"> • Work within appropriate meeting structures to manage Domestic Abuse and Hate Crime • Healthy Relationships, and Hate Crime to be key topics delivered as part of the early intervention and prevention programme • Promotion of all services available to victims • Identify and deliver training to front line practitioners to raise awareness and spot the signs of abuse • Engagement with Essex Police Domestic Abuse Problem Solving Team
Reducing the impact of drugs on the local community	<ul style="list-style-type: none"> • Establish a Gangs and Drug Related Crime group • Support the work of drug and alcohol treatment providers locally • Robust enforcement of perpetrators of crime by using all available tools and powers
Improving the perception of community safety	<ul style="list-style-type: none"> • Develop a programme of community engagement events, providing crime prevention materials to increase feelings of safety • Promote good news stories and successes • Deploy Community Safety Wardens to targeted locations to positively engage with residents and deter criminality • Design out crime in local spaces, utilising the Council's Safe and Sound Programme • Improve CCTV and links to Essex Police
Focusing on early intervention, engagement and raising awareness	<ul style="list-style-type: none"> • Deliver a programme to schools focusing on key issues relating to ASB, drug dealing and knife crime • Deliver sessions for parents/carers to raise awareness and spot the signs of grooming and exploitation
Tackling re-offending through Integrated Offender Management (IOM)	<ul style="list-style-type: none"> • Continue to deliver the IOM approach locally • Use of all tools and powers to effectively monitor and enforce breaches where appropriate • Essex Police IOM officers to work from the Safer Basildon Hub on an ad-hoc basis



Glossary

Child Exploitation – is a type of abuse and occurs where an individual or group takes advantage of an imbalance of power to coerce, control, manipulate or deceive a child or young person under the age of 18 years.

Integrated Offender Management (IOM) – IOM is the joint management of the most persistent and prolific offenders within a local community.

LGA – The Local Government Association is the national membership body for local authorities and they work on behalf of member councils to support, promote and improve local government.

MACE – These are Essex Multi-Agency Missing and Child Exploitation meetings creating a forum for the effective monitoring and reviewing of young people known to be exploited, at high risk of exploitation or vulnerable due to missing episodes.

Multi-Agency Tasking Group (MATG) – Monthly partnership meeting to discuss cases requiring a partnership response, where action plans are formulated and delivered to tackle the issues.

Strategic Assessment – The Strategic Assessment is the analytical product used to inform community safety priorities by identifying crime patterns and trends using a wide range of partnership data.

The Index of Multiple Deprivation (IMD) – Is the official measure of relative deprivation in England and follows an established methodical framework to encompass a wide range of an individual's living conditions.

VAWG – Violence against Women and Girls

The Safer Basildon Partnership Landscape

