



NEW WASTE SERVICE COMING SOON

BASILDON BOROUGH'S NEW WASTE SERVICE

2025

**BASIL
DON** BELIEVE IN
BASILDON



IMPROVING YOUR WASTE AND RECYCLING SERVICE

Basildon Council are improving your waste and recycling services across the borough for households. We have listened, now we are delivery, let's bring pride back in the borough.

Starting from Monday 28 April 2025, we are introducing:

- A weekly service for non-recyclable waste which will be collected from your wheeled bins, instead of fortnightly.
- Disposable white and blue plastic bags for your dry recycling, instead of the reusable recycling sacks.

Alongside this leaflet you will have received 2 rolls of each bag and from Monday 28 April, these are to be used instead of your reusable sacks.

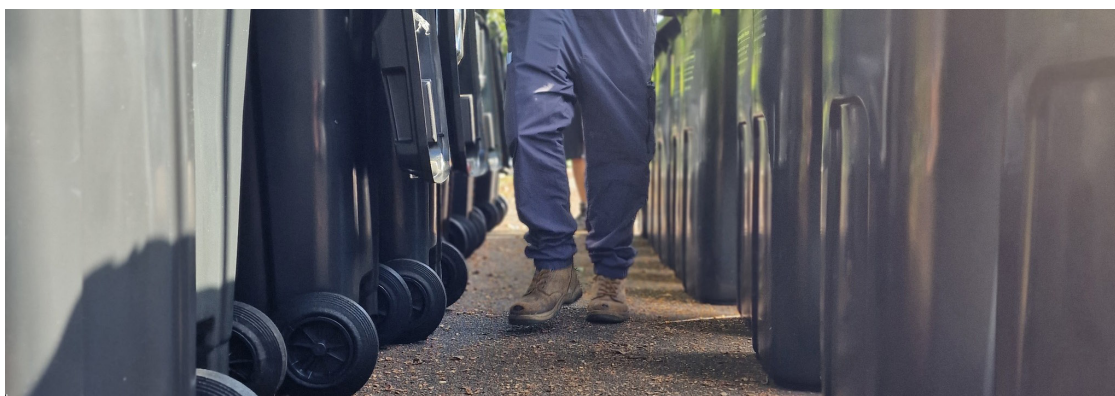
The same materials will need to be separated in the correct coloured bags.

Please do not use your new bags until week commencing Monday 28 April 2025.

The collection service will not be ready to collect the materials in the bags until Monday 28 April.

OLD RECYCLING SACKS

Your old recycling sacks will no longer be collected from Monday 28 April. These can be kept for personal use such as taking garden waste to the recycling centre alternatively, they can be returned to Barleylands Recycling Centre or given to our crews at your next Crunch service.



WHITE BAGS

PLASTIC AND CANS

Recyclable plastic bottles, pots, tubs, trays, containers, cartons, metal food and drink cans/tins, aerosol cans, tin foil, and tetrapak (food and drink cartons).

- Place the plastic and cans directly into the **WHITE** bag provided
- Make sure all items are rinsed of food or drink traces and squashed down.
- Place out for collection by 7:30am on your collection day at the edge of your property securely tied.



BLUE BAGS

PAPER AND CARDBOARD

Paper, magazines, newspapers, cardboard packaging, egg boxes, envelopes, and shredded paper.

- Place paper and card directly into the **BLUE** bag provided.
- Please try to keep items dry where possible and flattened.
- Place the bags securely tied out for collection at the edge of your property by 7:30am on your collection day.
- Additional cardboard boxes that do not fit in the sack can be flattened down and placed alongside your bags for collection.





BLACK WHEELED BIN FOR NON-RECYCLABLE WASTE WEEKLY COLLECTION

How to use your black wheeled bin

- Place non-recyclable items into your black wheeled bin. We encourage the continued use of sacks or household bin liners, but waste can be placed in loose if you wish.
- Unless the bin lid is closed, we will not empty the bin. Please ensure that the bins are not overflowing.
- Place out for weekly collection at the edge of your property by 7:30am on your collection day. Please bring your bin in after collection.
- All waste must be contained in the bin - Additional waste placed out alongside your wheeled bin will NOT be collected.



If you would like to find out more information about your waste and recycling services, please go to our website or scan the QR code www.basildon.gov.uk/wastechanges



For the latest information, download the **FREE** 'Our Streets' app www.basildon.gov.uk/ourstreets

If you require this document in a different format (e.g. different language, Braille, large font etc), please contact the council on 01268 533333



Basildon Council

