

together

Everything you need to know about your borough



**SPREAD THE GIFT
OF CONVERSATION
this Christmas!**



**Protect our NHS,
support one another
and save lives**

**James, from McLaren -
building his empire!**



**BASILDON'S
BOUNCING BACK!**

THE FUTURE IS BEING BUILT RIGHT NOW

Contents

- 05 Coronavirus support stay well this winter
- 06 Don't leave vulnerable neighbours out in the cold
- 07 The Community Hub
- 08 Basildon's Bouncing Back
- 13 Hospital radio keeps broadcasting thanks to Basildon storytellers
- 13 Basildon side by side
- 14 Are you ok Basildon?
- 15 Citizens advice are here to help in Basildon
- 16 Young parks volunteer clocks up 174 hours of service
- 17 30 new homes in Billericay
- 17 Winter is here, snow is coming...
- 18 Property maintenance and gas servicing is still a priority
- 20 Wickford's handball star enjoying European adventure
- 21 Over 13 million steps taken already
- 21 Accessible retail for customers with disabilities
- 22 New road crossings planned as alternative to charging clean air zone
- 23 Is Basildon creative?
- 24 Who helps the volunteers... during a pandemic?
- 25 Gateway FM – supporting our borough through Covid
- 26 Councillors of Basildon Borough
- 28 Safer Basildon
- 29 How the council works
- 30 Share your messages



Emergency contacts

Basildon Council tenant emergency repairs

For emergency repairs to remedy any defect which puts anyone's health, safety or security at immediate risk or which affects the structure of a building
Telephone: 01268 533333

Essex Police

Non-emergency report
Online: Essex.police.uk
Telephone: 101
Emergency
Telephone: 999

Crime Stoppers

Website: www.crimestoppers-uk.org
Telephone: 0800 555111

Basildon and Thurrock Samaritans

Telephone: 116123 (free from any phone)

Compass 24/7 domestic abuse helpline

Telephone: 0330 333 7444

Food Banks: Basildon

Email: info@basildon.foodbank.org.uk
Telephone: 07424 660 862

Billericay

Email: info@billericayfoodbank.org.uk
Telephone: 07707 466262

Helping Hands (Lee Chapel North)

Email: basildonhhfb@hotmail.com
Telephone: 07936 110424

Wickford

Facebook: www.facebook.com/wickfordfoodbank

Streetlink

If you find someone sleeping rough
Report to Streetlink:
www.streetlink.org.uk
Telephone: 0300 500 0914 (24 hour)

Welcome...

2020 has changed us all. It has been a year like no other. We have had to change how we live, by adapting how we work, changing the way we chat to our families and friends, even finding new ways to spend our leisure time. We clapped for the NHS, we donated to the wonderful Captain Sir Tom Moore and we actually meant it when we said: "Are you OK?"

Asking that simple question becomes ever more important as we wait for the vaccine to be rolled out across the country. My inbox is full of concerns about how we address the very real issue of everyone's mental health as we continue to fight this terrible virus.

That is why we have launched a new campaign encouraging everyone to check on a neighbour, make a call to that relative or friend you haven't spoken to in a couple of months – let's ask, "Are you OK?". If you are concerned about someone and feel that they could do with speaking to a professional, then please do refer them to Motivated Minds or another charity. All of the contact numbers are included in the magazine.

I have enormous pride in the people of Basildon; the inspiring individuals, groups, communities and businesses who have stepped up for others. And now, as our work really begins to transform Basildon town centre into an increasing economic powerhouse and the most dynamic destination of the south east, we can all be proud of Basildon too.



With the creation of 5,000 new jobs, great venues and shops, affordable homes for keyworkers, local people and veterans, improved transport and new opportunities for young people - Basildon will be the place where local people will happily choose to work, live, learn, raise a family, visit, and enjoy a wealth of culture, events and entertainment.

We are making good progress with the Basildon town centre regeneration. We are on course to inject more than £600 million of private sector investment into the town centre in 2021. This is an unparalleled level of investment in a town of our size. The potential for this place is obvious for the public and private sector to see.

This year has been a challenge, and there will be difficulties ahead, but there is nothing like a national crisis to reinforce a commonly held belief across Basildon, Pitsea, Laindon, Billericay and Wickford that there really is more that unites us, than divides us.

In the final edition of this year, I would like to say thank you - to everyone who worked to keep Basildon safe, to those who worked to keep Basildon open for essential services and to those who stayed at home to protect the lives of others.

I wish everyone good health, a very merry Christmas, and a happy new year.

Councillor Gavin Callaghan,
Leader of Basildon Council

Contact us

Together is produced by the Communications Team at Basildon Council. It is published four times a year and delivered free to almost 80,000 homes across the borough.

Do you have a story about the community or information about an event which you would like to be considered for inclusion in a future edition of the magazine? Or, for advertising enquires email

together@basildon.gov.uk
to get in touch with the team.

Visit www.basildon.gov.uk/together for information on how to download the spoken word version of Together, or call 01268 208198 to request an alternative format.

Basildon Council accepts no responsibility for the content of any advertisement published in Together and the inclusion of any advertisement does not imply approval or recommendation by the council of either the terms of any offer or service of the advertiser.

At the time of writing this publication, due to National Lockdown guidelines all of the council's public buildings are closed to the public. Please keep an eye out on the council's communications channels for future updates.

‘JUST’
THE
FLU?



**THE
FLU
KILLS.**

**JUST GET
YOUR FREE
FLU JAB**

**Ask your
pharmacist or
GP if you're
eligible**

The flu vaccine is routinely given on the NHS to:

- Adults age 65 and over
- People with long term health conditions including:
 - Chronic (long-term) respiratory diseases, such as asthma (that requires an inhaled or tablet steroid treatment, or has led to hospital admission in the past), chronic obstructive pulmonary disease (COPD), emphysema or bronchitis
 - Chronic heart disease, such as heart failure
 - Chronic kidney disease
 - Chronic liver disease, such as hepatitis
 - Chronic neurological conditions, such as Parkinson's disease, motor neurone disease, multiple sclerosis (MS), a learning disability or cerebral palsy
 - Diabetes
 - Problems with your spleen – for example, sickle cell disease or if you have had your spleen removed
 - A weakened immune system as the result of conditions such as HIV and AIDS, or medicines such as steroid tablets or chemotherapy
 - Being seriously overweight (a BMI of 40 or above)

- All pregnant women
- All children aged two to 11 years via nasal spray vaccine
- Household contacts of those on the NHS shielded patient list or of immunocompromised individuals
- People living in long stay residential care home or facility
- Those in receipt of carers allowance
- Health and social care staff including all care homes, hospices/ employed directly through direct payments (personal health budgets etc).

For more information about the flu vaccination visit the NHS website



Coronavirus support stay well this winter

At the time of writing this publication, Basildon, along with the rest of the UK is in lockdown measures.

Cases have been rising at alarming rates in Basildon and across Essex. Tighter restrictions now will bring the borough's rate of infection down and ultimately save more lives. In turn, this could lead to more restrictions being lifted in time for Christmas.

What you should do:

- Reduce social contact and remain within your household groups or support bubble only
 - Only travel when necessary
 - Regularly wash hands
 - Wear a face covering in enclosed spaces
 - Remain two metres apart and
- Download the NHS app and check www.gov.uk/coronavirus



Local GPs are encouraging people to act in clinical at-risk groups to get their free NHS flu vaccine to help protect them from flu and its potentially serious complications – especially given the ongoing COVID-19 pandemic.

GP practices will be contacting the most vulnerable people in the highest risk groups first as a priority. If you receive one of these letters it's important you respond so you can be allocated a suitable time for your vaccination and you are protected as early as possible.

If you are 50-64 you will be invited for the vaccine when there is sufficient vaccine available.

If you are not in a high-risk group please do not call your practice to request a flu vaccination so demand can be managed effectively.

Dr Adegboyega Tayo, local GP and Chair of NHS Basildon and Brentwood Clinical Commissioning Group, said:

“Flu can lead to more serious illnesses, such as pneumonia and also prevent it spreading to other family members. The flu virus changes each year, and with the additional complications COVID-19 has brought I'd urge the most vulnerable to get vaccinated to protect themselves and others against the latest strain when the time comes.”



Dr Tayo

together



Don't leave vulnerable neighbours out in the cold

If you have an elderly or vulnerable friend or neighbour, look out for them to make sure they are safe, warm and well. Checking-in with an elderly neighbour or loved one, either by phone or in person – complying with Covid-19 guidelines, is a good idea to make sure their house feels warm.

It's a good idea to have their number or a family member's number, and that they have a list of emergency numbers (including utility companies) if they ever feel worried or feel unwell during winter.

Not answering the door or responding to the phone, could be signs that something is up. If you notice any unusual activity (or inactivity) inform a family member immediately.

News in brief

Support if you are struggling financially

We recognise that Covid-19 has been a difficult period for everyone, your income may have suddenly changed and you have found yourself in a situation that you would not have been able to plan for.

If you're struggling to pay your rent and council tax, you may be eligible for a discretionary housing payment and/or an exceptional hardship payment.

Find out if you qualify and how to apply at www.basildon.gov.uk/hardship

Top tips to staying safe this winter:

- Keeping warm is important - keep the main rooms in your home, such as the living room and bedroom, heated to around 18-21°C (65-70°F)
- Warm clothing and a hot meal can also help prevent the most vulnerable people falling ill this winter
- Never use an electric blanket and hot water bottle together – this could cause electrocution
- Service boilers and appliances annually to protect against the dangers of carbon monoxide
- Anyone invited to get the flu vaccination should do so
- If weather conditions outside are icy, wear boots or shoes with suitable grips
- Take regular hot drinks and food



Since the March lockdown our Community Hub has received...

The
hub
BASILDON
COMMUNITY

£36M
IN BUSINESS
RATES RELIEF

13201

Covid-19 related
phone calls



1483

Referrals regarding
food banks,
volunteers,
befriending and
welfare checks

9638

Covid-19
related emails



PAID OUT...

SMALL BUSINESS & RETAIL,
LEISURE & HOSPITALITY GRANTS



£30,635,000

TO



2,252
BUSINESSES

£750K

PAID OUT TO...

818 households
Council Tax Reduction Scheme

5,013

Households supported
to amend council tax
payments



Financial help and support

We understand these new restrictions will hit many people hard and we are here to support you.

If you are having difficulty paying bills, such as council tax or rent, because of the impact of Covid-19 or need help with essentials like prescriptions, hearing aid batteries and access to priority food delivery slots, email

coronavirusresidents@basildon.gov.uk or
call 01268 533333 and choose option 1.

If you are on a low income and have been asked to self-isolate by the NHS, you can receive a lump sum payment of £500.

Apply online at

www.basildon.gov.uk/test-and-trace-support-payments

If you want information about the financial support available for your business email

coronavirusbusiness@basildon.gov.uk
or call 01268 533333 and select option 1.
www.basildon.gov.uk/coronavirus-business

We all have a part to play to protect our NHS,
to support one another and to save lives.

COVID-19 COUNCIL TAX
HARDSHIP FUND

8,846

Households supported
by payments of £150

522

Discretionary housing
payments totalling

£555K

to support shortfalls
in rent

together

BASILDON'S BOUNCING BACK!



Basildon is on the verge of an exciting and dynamic transformation, that is only befitting for our hard-working residents and businesses.

2020 has changed us all. We have adapted and become more resilient, finding new ways to live, work and play. For our extraordinary residents and businesses, it is more important now than ever to transform Basildon into the thriving and exciting place it deserves to be.

HOME IS WHERE THE HEART IS

Good quality housing will be created with dedicated affordable homes for keyworkers, veterans and local people. Homes will be built to strict standards, ensuring they are energy efficient and have space for people to enjoy.

The regeneration of Basildon town centre will help local people to get onto the local housing ladder, to be part of a new community and to live a good life - somewhere safe and suited to raising a family, and with everything on their doorstep.

BASILDON'S BOUNCING BACK!



SHOP, DINE, RELAX

The town centre will transform into the beating heart of Essex for you to shop and spend your leisure time. It'll be designed to impress you with more open space, attractive features, public art and creative murals.

Providing the right mix of shopping will be key – an interesting mix of shops, independent retailers, a bustling market, pop-up activities and a performance space – complimented by more family-friendly places to spend time.

In short, it will be a place where you want to go for everything you need, whether that's shopping, lunching in style, going for a meal in the evening with the family, enjoying some culture or seeing a film at the cinema.

NIGHTS TO REMEMBER

East Square will transform to house a new 10 screen cinema with the largest screen in the south-east, outside Leicester Square, for opening in 2021.

The multi-use venue, along with more family-friendly restaurants and leisure will provide the perfect backdrop for a fantastic new arena, attracting world-class acts and entertainment, to give everyone a truly memorable night out.

Culture will be at the heart of these exciting plans, expanding and shining a spotlight on our much loved Towngate Theatre. The BasildON consortium made up of community organisations, cultural leaders and the commercial sector, will bring more cultural activities to the night-time economy thanks to a £1.3 million in grant funding from the Arts Council.

Safety will also be a key priority, as the town centre will benefit from better lighting, more open spaces and other features that design-out crime.

GETTING AROUND

A much improved, accessible and welcoming local train and bus stations showcasing digital art, murals and local artists with better transport links will make it easier to get around the borough and beyond.

It will be easier, safer and more pleasant to walk and move around the town centre with new pedestrian crossings and improved walking routes, along with better signage, to help you find your way.

And cyclists too will benefit with more cycle routes to make it easier and safer to get around the town centre.

Zip cars will form part of the regeneration plans with more electric charging points, promoting more sustainable car usage.

FOR THE YOUTH OF TODAY AND TOMORROW

To give our young people the best possible future, the South Essex College digital campus will sit at the heart of the regeneration plans, providing skilled employees for businesses, and new opportunities for a population of 1,000 students.

The creation of a Youth Zone, working with the national charity Onside, will also ensure younger people are at the centre of the Basildon regeneration.

Aimed at young people aged 8-19, the Youth Zone will provide large-scale multi-activity facilities such as sport, music, dance, arts and a café.

Local, young people will be involved in the naming, branding and interior design of the Youth Zone as it takes shape, providing them with a safe, supportive and affordable place where they can spend their free time constructively.



THE
Youth
ZONE
BASILDON

ENVIRONMENT FRIENDLY

Basildon town centre will benefit enormously with more green spaces where everyone can enjoy the great outdoors.

More cycle and walking routes and Zip cars with more electrical charging points will mean that the town centre is accessible for all, and people can get around greener and easier whether by car, bicycle, or footpath.

As new buildings are built, low-carbon materials will be used with energy efficiency and renewable energy at the forefront. And more green spaces and trees will increase the biodiversity in the town centre, with improved links to existing parks and green spaces. This will include exploring a green route through the town centre.

Finally, more efficient and less polluting night-time lighting will reduce the threat to our night-time wildlife.

NEXT STEPS

Some parts of the regeneration plans are well underway. The new South Essex College digital campus will open early in the new year in Market Square, and the new 10-screen cinema development in East Square will also open in 2021.

With the rest of the regeneration, we are now setting out how these ambitious plans can be turned into a reality, inviting interested businesses and organisations to submit planning applications for everything from housing through to more family-friendly entertainment and retail. This also includes working with partner organisations to improve the cultural offering and explore greener options for the town centre.

As these exciting plans take shape, please continue to have your say and get involved. Keep an eye out on the Council website and social media for more information.

www.basildon.gov.uk

www.facebook.com/basildonboroughcouncil

[@BasildonCouncil](https://twitter.com/BasildonCouncil)

Sign up for our regular eNewsletter bringing the latest news directly to your inbox

www.basildon.gov.uk/keepintouch

BASILDON'S BOUNCING BACK!



BOUNCING BACK IN NUMBERS



NEW RAIL & BUS STATIONS TO
MAKE IT EASIER TO GET AROUND



DIGITAL CAMPUS TO
SUPPORT THE ECONOMY



IMPROVED PUBLIC SPACES
& PUBLIC ART



GREEN SPACES, WALKING
& CYCLE ROUTES



YOUTH ZONE FOR EVERY
8-19 YEAR OLDS



HOMES FOR LOCALS



5,000 NEW JOBS
FOR THE LOCAL ECONOMY



10 SCREEN CINEMA,
RESTAURANTS & BARS FOR
NIGHT TIME ECONOMY



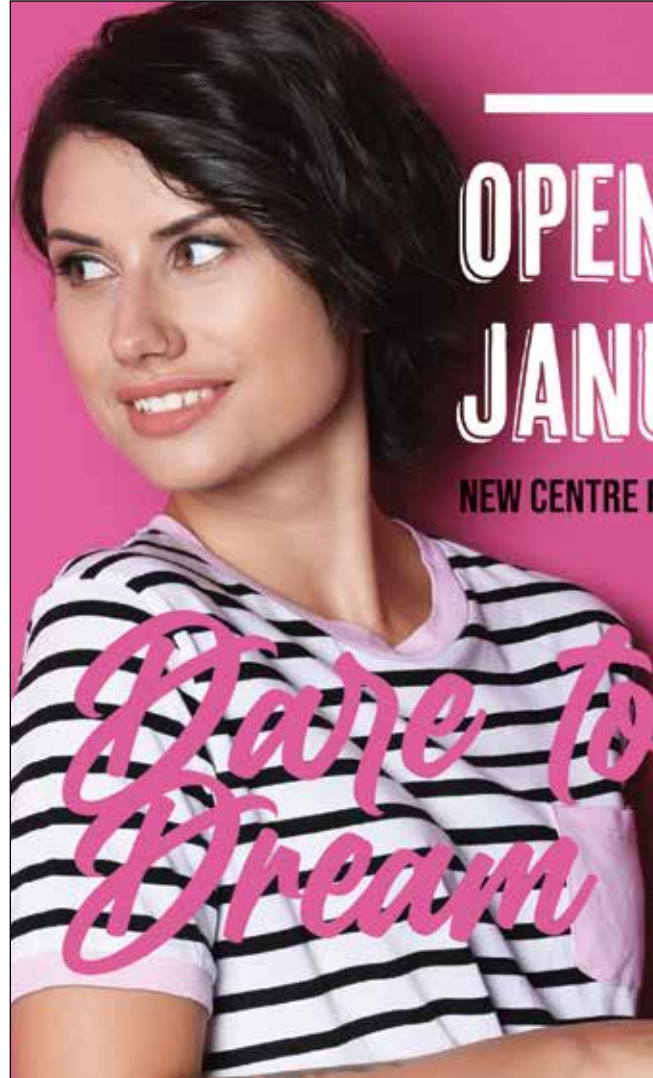
SAFER TOWN CENTRE



ARENA TO ATTRACT
WORLD-CLASS TALENT
& MORE CULTURE



BELIEVE IN
BASILDON



OPENING JANUARY 2021



NEW CENTRE FOR DIGITAL TECHNOLOGIES IN BASILDON TOWN CENTRE

STATE-OF-THE-ART FACILITIES AND EQUIPMENT FOR COURSES WITH A TECH FOCUS. EQUIPPING YOUNG PEOPLE AND ADULTS WITH THE SKILLS TO WORK IN THE GROWING DIGITAL TECHNOLOGY INDUSTRY.

IMPROVE YOUR DIGITAL SKILLS AND GAIN A QUALIFICATION IN:
IT NETWORKING • APP DEVELOPMENT • GAMES DESIGN • ANIMATION

TO FIND OUT MORE CALL: 0345 52 12345

**VISIT: WWW.SOUTHESSEX.AC.UK
/NEW-STATE-OF-THE-ART-CAMPUS-IN-BASILDON**

Dare to Dream

Please mention **The Village Emporium** when responding to advertisers

MAKE YOUR WILL! ...IN THE COMFORT OF YOUR OWN HOME

Do you and your family have the **peace of mind** of an up-to date **Will**, or a **Power of Attorney** for yourself or your parents, or **Legal Guardians** for your children under 18 ?

My professional services for Will Writing, Power of Attorney, Probate, Inheritance Tax Planning and Care Home Fees Mitigation are offered **7 days a week** on a **fixed fee** basis **in your own home**, regardless of consultation time and number of visits: **weekend meetings are offered at no extra cost**



MARTIN ENGLEMAN

AIPW AFPC DipPFS Certs CII (MP & ER)

Qualified Member of the Institute of Professional Will Writers

Please visit www.businessadvisoressex.co.uk for more detailed information, then call me for a fixed fee quotation and free advice

01268 761022
07901 948745

1 Nesbit Close, Wickford, Essex SS12 0PT

**ENGLEMAN WILLS
+ POWER OF ATTORNEY + PROBATE**



KALLIMA
SPIRITUAL CENTRE
www.kallima.co.uk
8A ADAM BUSINESS PARK,
CRANES FARM ROAD, BASILDON, ESSEX SS14 3JF

Telephone: 07780 053 703

Website: WWW.KALLIMA.CO.UK

Facebook: KALLIMA

**For all things Spiritual
including Pagan, Mindfulness
Craft Workshops & Mediumship etc.**

**Check out our brilliant Shop - Workshops - Events & Circles
15% Off Shop Sales With This Advert**

CHECK OUT OUR ON-LINE NEWSLETTER ON FACEBOOK

Shop	Readings
Thursday - Saturday 12.00pm - 6.00pm	By Appointment Only
Sunday - 12.00pm - 2.00pm	Workshops - Courses - Circles
Monday - Wednesday - Closed	Times & Days Vary





Hospital radio keeps broadcasting thanks to Basildon storytellers

When Covid-19 closed large parts of Basildon Hospital, a much-valued service, Basildon Hospital Radio (BHR), was unable to broadcast from their studios. The radio station, which is run entirely by volunteers has been taking patient and staff music requests and keeping them updated on local and national news for more than 40 years.

Within a short time, they reinvented themselves as a local radio station operating from the internet at BHR87.7. This left them with one major problem, no means of fundraising.

It stepped the Basildon Writers' Group, with an offer to donate all their royalties from their new book, 'It Happened in Essex', to BHR. From memories of

Raquels to coach trips to Southend, the book is a collection of short stories with Basildon and South Essex at its heart.

Colin Payn from the group said: "Members of our group have been guests on Basildon Hospital Radio many times, reading short stories or excerpts from our latest book. We felt this was a constructive way we could give something back for those opportunities."

'It Happened in Essex' is available from Amazon as a paperback or on Kindle, it would make a great Christmas present for anyone who enjoys short stories with a local twist and you will also be supporting a much valued service to both the staff and patients at our local hospital.

Basildon Side by Side

Basildon Side by Side is an initiative that was developed in response to the Black Lives Matters Campaign. It aims to understand the life experiences of BAME communities and to improve the quality of the lives of those living, working and visiting the Basildon borough.

The initiative focuses on a number of key themes which include leadership, hate crime and policing, addressing social economic factors, education, working with young people, health and wellbeing and supporting community cohesion.

The chair of Basildon Side by Side Dr Ukpaka says that "Basildon communities have enormous potential and we would like people from all walks of life to join us in seeking the right solutions for a better Basildon Borough."

If you would like to join Basildon Side by Side, please email Diversity@basildon.gov.uk



.....together



LET'S SPREAD THE GIFT OF *conversation this Christmas!*

Coronavirus (COVID-19) is affecting all our lives. Things have been changing fast, and many of us are worrying about what it all means for us and for our loved ones.

For people who may be already living with mental health problems, they are facing extra challenges every day. Whilst public health actions, such as social distancing are absolutely necessary to reduce the spread of COVID-19, they can make people feel isolated, increase stress and anxiety.

And, in the lead-up to Christmas, which can also be a difficult time for many, whether it be financial, employment, health or companionship problems, we don't want you to suffer in silence.

Basildon Council has teamed up with Basildon-based well-being provider Motivated Minds to raise awareness of the importance of self-care and caring for others, by asking 'Are you ok?'

If you're not ok, it's important to speak to someone and access local support services for help.

If you need face-to-face support the Motivated Minds Happy Hub, located in Eastgate shopping centre, is open 7 days a week between 2-4pm, for crisis support and an emergency food bank.

If you are ok, then why not check on your neighbour, make a phone call or if you know someone who would benefit from a call or a letter from a trained volunteer at Motivated Minds visit: **www.motivated-minds.co.uk**

Spread the gift of conversation this Christmas.

List of support services and further information at:
www.basildon.gov.uk/areyouok

Citizens Advice are here to help in Basildon

Citizens Advice Basildon is providing extra one-to-one help to those who are claiming Universal Credit for the first time.

Citizens Advice Basildon provides free, impartial and confidential advice across Basildon, Billericay and Wickford. The charity, which has helped more than 1,700 people with Universal Credit issues since lockdown, already runs a Help to Claim service which supports people who are applying for Universal Credit right up until they get their first payment.

Extra funding from Essex County Council means Citizens Advice can offer appointments to check what further help people are eligible for. This could be more support for self-employed residents whose income has been reduced due to Covid-19, council tax reduction or free school meals.

Help to Claim adviser Rachiel Cabrelli, said: "We know that navigating the benefits system can feel overwhelming and confusing. We are here to help make the process as straightforward and anxiety-free as possible.

"We will show you how to claim Universal Credit, and to see if extra help is available to you – such as a council tax discount or help to deal with your debts.

"Whether your questions are simple or complicated, we have the experience and know-how to assist you with whatever you need. Get in touch and let us help.

Citizens Advice Basildon is also running video drop-in sessions between 9.30am and 12pm on Mondays and Thursdays in the Basildon Centre, St Martin's Square.

There are a number of other ways people can continue to get advice during this time:

- **24 hours a day www.citizensadvice.org.uk**
- **General advice Adviceline 0300 330 2101. This is open Monday to Friday from 9am to 5pm and Saturday mornings until 12noon**
- **New claims - Universal Credit Help to Claim line 0800 1448444**
- **The Money Adviceline 01277 358082**
- **Billericay residents can call the Billericay Adviceline 01277 358080**
- **Consumer issues Citizens Advice consumer helpline 0808 223 1133**
- **Citizens Advice Warm Homes Essex website www.warmhomesessex.org.uk/**

The charity is also recruiting new volunteers to deliver its service, training and an extensive package of support is available, www.citizensadvice.org.uk/local/south-essex/ for application details.





volunteer 174 hours of service

When the Covid-19 pandemic hit the country earlier this year 17-year-old Sean Owers could not have predicted how it would shape his future.

Before lockdown Sean was busy attending a public services course at Seevic College and playing college rugby as well as representing Basildon Rugby Club's under 18s team. He had just attended trials for Essex but before he could take part in two trial games the Covid-19 pandemic happened and put his rugby ambitions on hold as well as all his other interests and commitments.

With time on his hands Sean decided to take action and having seen the rubbish strewn across Basildon's parks volunteered his services with the council's parks and countryside team.

The young volunteer has now clocked up 174 hours of service to Basildon Council's parks and countryside team since May.

He said: "I have always been very active and always on the go and with the sudden lockdown everything I had such as college, work and rugby all stopped. So I found

myself sitting at home with not a lot to do so I decided to volunteer with the parks team. After a couple of weeks I realised that I was really enjoying myself and wanted to do more. The fact I was able to get out the house and do some good rather than sit in my room really motivated me. I wanted to do as much as I possibly could to help out, and not only to help out people within the parks team but to help myself both mentally and physically."

Sean started working at the weekends as a litter picker within five of the major parks and after four weeks was asked if he could help out during the week to undertake a variety of jobs.

Sean has a clear message for anyone else looking to volunteer in the parks. He said: "I would highly recommend volunteering as it is an incredible experience."

If you are interested in volunteering visit www.basildon.gov.uk/countryside-volunteers



News
in brief

CCTV trial targets fly tippers

Did you know that flytipping costs taxpayers £70,000 a year?

A trial of mobile CCTV which began in August is helping to combat the blight of flytipping. Since the trial began, 11 fixed penalty notices have been issued as a result with a total of 63 across the borough - a sign that the system is making people think twice about dumping their rubbish in public. If you have information about someone who's flytipping, download the Our Streets app and report it.





30 new homes in Billericay

Construction will soon be starting on 30 new shared ownership apartments in Billericay.

Veterans of the Armed Forces and borough key workers and residents will be given priority on the properties at Queens Park Court.

Improvements to the existing sheltered accommodation will be delivered alongside the new build scheme of one and two bed apartments which will be available on a shared ownership basis.

Leader of Basildon Council Councillor Gavin Callaghan said: "Through Sempra Homes we are able to take a Basildon first approach to housing by creating opportunities that will give veterans of our armed forces, key workers and borough residents the chance to get a foot on the property ladder. Money raised through sales and rent will help the council to plug the growing financial deficit it is facing as a result of the Covid-19 pandemic."

Manager of Sempra Homes Melanie Keys said: This is an exciting project for Sempra where we will be delivering much needed affordable homes suited to both first time buyers and downsizers. We are working in partnership with Homes England to deliver this scheme and I look forward to working with Davis Construction with the construction of the new homes and Calford Seadon our employers' agents."

Managing Director of Davis Construction Tom Davis added: "We are very enthusiastic to get started on this great project at Queens Park Court and look forward to commencing the building works on site, to bring the vision of these brand new apartments to life. We are also proud to be using local trades on this development."

Wickford-based Merk Scaffolding have been contracted along with Jewson from Billericay which will supply building materials and Laindon-based Magnet Trade supplying all the kitchens.

With winter upon us and the very likely prospect of ice and snow it's time for the gritters to get to work on our roads.

Essex County Council have 57 operational ploughs that work across 57 routes. They also fill up borough salt bins and will fill approximately 36 tonnes of salt across the county this winter season.

If you live on a street that doesn't get gritted or would like to get stuck in and clear snow yourself we've got some tips to make it easier.

Clearing snow is hard work and the most important thing is to look after yourself when doing so.

So what are the most appropriate tools to use? If you have a plastic lightweight snow shovel, or a wide bladed shovel, then you've got a number one tool. If you've got a standard metal shovel, then that's a handy tool as a second option but snow may stick to it.

Ideally, the best time to clear snow is in the morning. That's because it's much easier to clear fresh, loose snow, compared to when people have been stepping on and compressing the snow/ice through the day. Also, if you clear the top layer of snow in the morning and the sun comes out, that will melt the ice underneath.

Spreading salt on the cleared area will help prevent ice from forming in its place. If you've got a salt bin

on your street, then the salt/sand mix in these will do the trick. What some people don't know though is that table or dishwasher salt are just as good alternatives. And if you do have any sand lying about anywhere - that does the job too!

Happy snow season Basildon

Winter is here, snow is coming...



..... together



Property maintenance and gas servicing is still a priority during the pandemic

The pandemic has created many challenges for the maintenance service sector; one of these was maintaining access to residents' homes to complete essential repairs and the annual Landlord Gas Safety Records, which is a legal requirement.

Despite the challenging period, Morgan Sindall Property Services (MSPS) worked thoroughly with their clients and currently has a Gas Safety Record Compliance of 99.81% across the Basildon gas contract.

It is important to be gas compliant and let engineers in to your property to do their work when your gas safety check is due. To keep safe, check out the top tips on gas safety below:

- Make sure gas appliances are professionally checked annually
- Always check the engineer is Gas Safe registered and qualified for the type of work they need to do (you can find this on the back of the Gas Safe ID card)
- Check for warning signs that could indicate appliances are not working correctly (visit www.gassaferegister.co.uk for further information)

- Install an audible carbon monoxide alarm, these should be marked EN50291 and display the British Standards' Kitemark
- Make sure vents are not blocked, as they are vital to ensure gas appliances burn properly, and chimneys need to be cleaned and checked regularly
- MSPS works in partnership with Basildon Borough Council to ensure appropriate measures are in place to protect staff and the community. During the pandemic MSPS implemented and adopted Safe Systems of Work as part of their six COVID-19 Secure Standards, this included:
Reducing the risk of working in occupied properties to the lowest practicable level
- While working in communal areas social distancing measures were in place (including physical barriers to maintain 2m safe working zones). Strict and recorded cleaning regimes as well as clear signage to divert and reduce risk of foot traffic. Special consideration was given to working in areas of vulnerability, such as sheltered accommodation.

News in brief

Our Streets Basildon

Download our free waste app **Our Streets Basildon**, designed exclusively for the benefit of our residents across the borough.

Within the app you are able to check your recycling collection day, order a special collection, report missed collections and any other issues that are affecting your street.

The app is available for download on Android and Apple devices, and is an amazing new way to get access to recycling information, request a service and to also report any problems whilst you on the move.

Never miss out on bin collection again!



Are you looking for some help with your CV, interview technique and job searching skills?

Do you need advice on updating your CV ?
Need help answering interview questions?

We offer 1-2-1 CV sessions for further support!

Join our FREE virtual sessions to learn more!

CV writing workshop

Employability skills, interview techniques and preparation

How to book?

To reserve your free place for some informal friendly advice please contact: **Luke Culling**, Social Value Business Partner at MSPS, on luke.culling@morgansindall.com

Looking forward to working with you and with any luck there will be lots of future success stories!

REMEMBER we also run **BasWorx**, our work to learn programme, the next cohort starts in **April 2021** – email Luke and enquire today!

 [morgansindallps](https://twitter.com/morgansindallps)  [company/morgan-sindall-property-services](https://www.linkedin.com/company/morgan-sindall-property-services)
 [morgansindallpropertyservices.com](https://www.morgansindallpropertyservices.com)



Did you know...

- 10 BasWorx cohorts
- 94 residents completed the programme and successfully gained qualifications to support moving into employment

Energy Cafe

Does your home have condensation?

Do you need help working out your energy bills and recording your fuel usage?

Or would you like to identify energy efficiency improvements in your home?

We can teach you all these things and much more, enquire about our next FREE virtual session today!

How to book?

To book your free place for some friendly energy efficient advice please contact:

Luke Culling, Social Value Business Partner at MSPS, on luke.culling@morgansindall.com or **07870 377628**.

We look forward to fuelling you with some fantastic lots of top tips and hopefully saving you some money as well!

 [morgansindallps](https://twitter.com/morgansindallps)  [company/morgan-sindall-property-services](https://www.linkedin.com/company/morgan-sindall-property-services)
 [morgansindallpropertyservices.com](https://www.morgansindallpropertyservices.com)





Wickford's handball star enjoying European adventure

As a teenager attending The Bromfords School in Wickford, Josh Da Silva was an accomplished multi-sporter. He gained district medals in athletics and played on all the school sport teams. Then, in 2012, aged 15, he got introduced to a new sport. And four years later he was representing Team GB and in that said sport.

"I was very fortunate. To be tall, left handed, it's something that's a bit of gold dust in this sport, to find those characteristics," said the six-foot-five 24-year-old.

And without his PE teacher at the school who introduced him to the sport, none of his achievements would have been possible.

"I hadn't heard of Handball until it was introduced to me by Mr Baker. He played for a team himself, and was really passionate about growing the sport in the UK".

"He got our school team into regional and national competitions, and has been supportive of me through my whole journey. I owe a lot to him."

It was at these tournaments that Josh's natural ability got noticed. Taking the sport from being one of the many he dedicated his time to, to being his sole focus.

"After getting scouted for the national programme, within six months of playing I'd been to Sweden and Denmark. In all my years playing football I never had those experiences."

These experiences were just the start. As a resident of Wickford, Josh hasn't spent much time here in the last few years. His professional career has taken him on a journey around Europe, starting with a year in Denmark, before two years in Portugal, then he moved on to Spain for a year and a half, before returning to Portugal again.

And then the coronavirus pandemic struck. His contract in Portugal was cancelled, and he returned home – unsure about his career in the sport.

Luckily, he got contacted by a club in Spain in July, and the journey continues.

"This is a very serious project that I'm a part of now, and especially with the virus at the moment, having the security that comes with a professional contract is a blessing."

The professional club career he's managed to forge for himself is impressive in itself. But the dream of any young sports person is to play for their country, and Josh has managed to. Enjoying every minute of doing so.

"Being a part of Team GB for the first time, I had the opportunity to go to Kosovo. To be on a team alongside people I had watched on the TV at the Olympics was really surreal."

"Representing your country is an amazing feeling. And when you're playing at home and your family and friends are watching too – its extra special."

News in brief

Keep Basildon Active at Home

More and more of us are spending time at home, so Active Essex have compiled some ideas and videos on how you can keep active when you're at home.

Staying active is really important for all of our mental health and wellbeing. From ideas on how to keep your whole family active, gentle low impact exercises to high energy activities – you will find lots of ideas, online workouts and downloadable resources on their website.

Just visit www.activeessex.org/keep-essex-active-at-home



Rachel



Over 13 million steps taken already

Since launching in Basildon in June, Street Tag has met huge success. The app encourages individuals and families to be active every day - walking, running and cycling all count. Virtual tags are created around local parks and neighbourhoods and by scanning those tags, you earn points.

Following the end of Season One, Basildon residents clocked up a huge 20,299 miles, scanning 47,469 tags and taking over 13 million steps. When the leader board resets, the 15 top teams earn prizes - ranging from Amazon vouchers to sports equipment.

After launching the app during lockdown, founder Seun Oshinaike has big ambitions for Street Tag in Basildon: "We are looking forward to having more families and local businesses' staff on board. We are making physical activities fun, easy to do and together we can reach 100 million steps by the end of 2021."

Currently, we all know how hard NHS staff are

working and the pressure they're facing. During lockdown, Rachel Deane - a keyworker at Basildon Hospital, used Street Tag to help her stay positive. "We've been going to parks as a family, and used the app together, which I've really enjoyed," Rachel said. "Street Tag has given us a purpose to go out and hunt for tags, it's been fun!"

So far, the local competition has engaged families of all ages, as Rachel explained; "One of my favourite things about Street Tag is going to new places and finding parks we've never seen before as a family." Even after joining halfway through the season - Power Hour and daily walks helped shoot Rachel's team into a prize-winning seventh place.

Street Tag Season Three begins on 23 November 2020, but you can join the competition at any time. Download Street Tag here: www.basildon.gov.uk/streettag

Accessible retail for customers with disabilities

The Inclusive Basildon Borough Project was launched by Basildon Council (in association with Perito Ltd) earlier this year to make the borough more inclusive and accessible whilst also creating greater economic opportunities for businesses and organisations to unlock the purple pound. As part of the project, an accreditation scheme has been designed to help tap into the economic power of shoppers who might not be able, or have the confidence, to access the borough's high streets and businesses.

The accreditation scheme features a five-level membership scheme that businesses and organisations can join,

which will help them on the journey to become more inclusive and accessible. In addition, it lets customers know where they can find various forms of greater accessibility in the retail market.

Inclusive Basildon Borough, alongside the accreditation scheme, is trialling a welcome app; an easily accessible customer-service tool designed to help businesses provide a more tailored customer-service experience for both visitors and consumers, by being able to prepare for their visit in advance of their arrival.

Find out more about the Inclusive Basildon Borough project at www.inclusivebasildonborough.co.uk



Residents and businesses in Basildon are being encouraged to have their say on air quality and a proposed pedestrian and cyclist crossing scheme which is expected to avoid the need for a charging clean air zone.

A stretch of the A127 in Basildon and two areas to the south of it, notably in East Mayne, were identified as exceeding legal limits for nitrogen dioxide – a harmful gas caused by vehicle emissions.

The Government directed Essex County Council and Basildon Borough Council to improve air quality on the A127 as quickly as possible and a new 50mph speed limit was introduced earlier this year. Further work has since been taking place to establish what measures would be needed to bring air quality in East Mayne within legal levels as soon as possible.

The councils were instructed to assess the likely effectiveness of a potential charging clean air zone, which would have seen drivers of certain more polluting vehicles charged for driving within a designated zone. Both councils are strongly opposed to the idea and have been carrying out extensive work to identify and assess possible alternatives. As a result, a scheme to relocate shared pedestrian and cyclist crossings in East Mayne has now been identified as a preferred option.

The proposals would reduce people's exposure to poor air quality, while complementing wider initiatives to encourage a shift to cleaner travel in Basildon.

Improving poor air quality and reducing exposure to it will mean more people, especially children, live safer, greener and healthier lives.

**Find out more about the proposals and access the online Basildon air quality survey via www.essex.gov.uk/airquality
The survey closes on Sunday, 13 December.**



New road crossings planned as alternative to charging clean air zone



We can all play our part in improving the air we breathe by swapping some of our journeys to walking, cycling or public transport, especially for shorter trips.

The Stop.Swap.GO! campaign is making getting around Essex by bus, bike or on foot easier and more rewarding than ever before.

Find out more at www.stopswapgo.co.uk

Stop.Swap.GO!

SAFER, GREENER, HEALTHIER



Is Basildon creative? Drive what you want to see on your doorstep

BasildON Creative People & Places is a programme funded by Arts Council England that is dedicated to getting the community choosing, creating and taking part in art experiences in Basildon. It is one of just over thirty in the UK and the only one in Essex. The idea is provide the community with opportunities for local people to commission, create and participate in cultural activity in Basildon.

BasildON Creative People & Places is all about YOU driving and deciding what cultural activity YOU want to see on your doorstep. Whether it's uplifting the town centre with bright and beautiful murals, turning our public squares into dance floors or transforming vacant shops into music hubs, nothing is impossible, if we all work together!

"Creative People & Places is possibly the UK's most radical cultural experiment, prising the reigns of cultural commissioning from the traditional gatekeepers into the hands of local communities," says Christine Santa-Ana, Programme Director of BasildON Creative People and Places.

"That's what we love about the programme. It's not about us picking and choosing what we think local residents will want, it's about local residents actively being involved in every aspect of the programme, from decision making and commissioning through to project delivery and participation.

"The foundation of the programme is 'Community Voices' where the people of Basildon can have their say in cultural happenings," said Christine. "By signing

up on our website, www.creativebasildon.co.uk, local people can access free cultural trips, nominate themselves to join commissioning and decision making panels and ultimately get their voice heard."

Another option is 'Open Lab' which launches in late November 2020. This programme hands over the keys of vacant shops and between £1000- £10000, "to creative individuals and organisations to weave their magic and transform dead spaces into hives of activity, events and cultural happenings."

There's more: other access points include 'NICHE', "a radical learning programme for 'doers' that will support local people to create, make and deliver the cultural activity they want to see in Basildon," says Christine. Or 'Connect' which is a "business support programme, creating a bridge between commercial businesses and creativity, say "a local restaurant hosting a musician to play for diners and the benefits of this are an increases in footfall, dwell time and positive PR" for example.

And 'Digicult' will be a vibrant centre of culture, digital technology and creative enterprise. The venue will host workspace, independent food vendors, start-up businesses and creative space as well as regular performances, workshops and events.

Christine finishes by saying: "We see Basildon as a borough of 185,000 artists and we're super excited to be working with local people to unleash their creativity, in turn putting our borough back on the map as a hub of innovation, inspiration and culture."



Basildon

Volunteer Network

Delivered By 

Basildon, Billericay & Wickford | CVS

Who helps the volunteers... during a pandemic?

There is one organisation in our borough that specialises in doing that very well. Simon Johnson, Chief Officer of the Basildon, Billericay and Wickford Council for Voluntary Service (BBWCVS) helps volunteers. And the organisation he runs has been helping people to volunteer, and non-profit organisations to run effectively, since 1989.

They have just launched a new Volunteer Network to make it much easier for people to volunteer locally by centralising all the volunteering opportunities in the borough. It also allows people to trade services via a Community Exchange, and can act like a message board for volunteering, allowing people to volunteer in countless ways.

"People can volunteer for two days and still get paid their full days' pay," Simon says, speaking to us from his home/office in the new working-from-home reality. "We'll link them up with a charity or an elderly home for example, that will help with employer-related volunteering and get those people into places where they are needed."

The BBWCVS volunteering network is perfectly timed to make it easier for the new surge of younger, COVID-era volunteers to find people who need their skills. Funded by the National Lottery, the Basildon, Billericay, and Wickford Volunteer Network is an easily accessible online platform that allows people to safely volunteer, helping support vulnerable individuals across the borough.

"We want to make it easier. Volunteering is such a big a subject," Simon said. "Before Covid-19, most people

who volunteered were over 60 but they're more vulnerable and most have stepped back. Now it's teenagers up through to 40-year-olds. So we're harnessing that."

No matter what, the next six months are going to be weird. To help focus, Simon sees this period as "very much about how can you help your community and how can your community help you?" he said. "We're looking to try and highlight the non-profit organisations that are going to protect our hospitals."

"We obviously don't know what the future is, so we're trying to create various voices from our sector: we have a mental health forum which is a key area at the moment; we're also looking at digital isolation, and how we can keep good, strong communication going between people especially the more vulnerable people and older community members who only have a TV and possibly a radio: how do we keep them up to date with relevant information?"

For him, despite the complexity, there's a clear solution: "If people want to do a good thing then there shouldn't be a barrier to do that. We'll help them to make that happen. Whether you're an individual, an already existing group or even business Basildon, Billericay, and Wickford Council for Voluntary Service can help."

If you are interested in volunteering or need help with your volunteer organisation, go to: www.bbwwolunteernetwork.co.uk

Gateway FM – supporting our borough through Covid

Gateway 97.8 FM is a radio station run by the community for the community and it has kept going despite the coronavirus pandemic.

But how do they continue to support the local community through lockdown? They introduced the Covid On The Radio scheme.

“On The Radio gives out free radios to people who are isolated and vulnerable,” said Johnny Jenkins, DJ and editor for the station.

“The initiative really took off. I mean, who wouldn’t want a free radio? But this programme is a lot more than that.

“There was a 100-year-old man, who recently recovered from Covid-19. He reached out to us and we gave him a free radio. He couldn’t see any friends or family, and the radio was his friend.”

“Some people might say they listen to the radio when they do the washing up or on the way to school, but for a lot of people it’s all they have all day every day. It’s so important for them to hear another voice.”

Aside from the On The Radio scheme, Gateway recently won the prestigious Princess Royal Training award, for its work doing just that – training Basildon residents up to be the best they can be.

Johnny said: “We’re really chuffed to win this award.

It means a lot because it’s about our training. Helping and supporting our community is our sole purpose as a radio station, and this award means we’re doing just that.”

And it isn’t just training people up to be the best radio DJ’s. In fact it’s a lot more than that. It’s about improving the confidence of young people in the borough, building their communication skills, their resilience – employability skills to help them go further in life.

Johnny added: “We had a lady who came to us through the job centre as a volunteer to build up her skills, as she was looking for work.

“She worked on our reception desk. After being with us for a while, you could see how much her confidence had improved. And the skills she gained from Gateway helped her to get a full-time job at Tesco.”

Whether you’re an aspiring DJ, producer, receptionist or a whole number of other things – there’s a friendly, welcoming community waiting for you at Gateway.

If you are a young person with an interest in radio or music and want to explore that further, contact reception@gateway978.com for details about the different opportunities that they can offer, including their radio club for young people.

WARM UP THIS WINTER WITH YOUR LOCAL RADIO STATION...



www.gateway978.com



Johnny



.....together

BILLERICAY WEST



Anthony Hedley
01277 626198
25 Prower Close,
Billericay
CM11 2BU



Daniel Lawrence
01277 657480
c/o The Basildon Centre,
St Martin's Sq, Basildon
SS14 1DL



Phil Turner
01277 633918
27 Cranmer Close,
Billericay
CM12 0YQ



David Dadds
01277 631811
c/o The Basildon Centre,
St Martin's Sq, Basildon
SS14 1DL



Andrew Schrader
07769 651708
c/o The Basildon Centre,
St Martin's Sq, Basildon
SS14 1DL



Stuart Sullivan
01268 560477
6 Great Saling,
Shotgate, Wickford
SS11 8XH

BILLERICAY EAST

BURSTEAD



Andrew Baggott
01277 634375
2 Raven Lane,
Billericay
CM12 0JD



Kevin Blake
01268 470597
66 Walthams,
Pitsea
SS13 3PN



Richard Moore
01277 627266
47 Laindon Road,
Billericay
CM12 9LG



David Burton-Sampson
07480 339823
Mayor of Basildon
c/o The Basildon Centre,
St Martin's Sq, Basildon
SS14 1DL



Maryam Yaqub
07393 967607
c/o The Basildon Centre,
St Martin's Sq, Basildon
SS14 1DL

LAINDON PARK



John Scarola
07984 943349
c/o The Basildon Centre,
St Martin's Sq, Basildon
SS14 1DL



Hazel Green
07903 480549
c/o The Basildon Centre,
St Martin's Sq, Basildon
SS14 1DL



Jeff Henry
07733 221362
c/o The Basildon Centre,
St Martin's Sq, Basildon
SS14 1DL

ST. MARTINS

LEE CHAPEL NORTH



Olukayode Adeniran
01268 533333
c/o The Basildon Centre,
St Martin's Sq, Basildon
SS14 1DL



Andrew Gordon
07817 865202
c/o The Basildon Centre,
St Martin's Sq, Basildon
SS14 1DL



Elaine McDonald
07507 929073
c/o The Basildon Centre,
St Martin's Sq, Basildon
SS14 1DL

LANGDON HILLS



Imelda Clancy
07563 748334
c/o The Basildon Centre,
St Martin's Sq, Basildon
SS14 1DL



Stephen Hillier
07748 630222
c/o The Basildon Centre,
St Martin's Sq, Basildon
SS14 1DL

NETHERMAYNE



Derrick Fellowes
07788 298007
Deputy Mayor of Basildon
c/o The Basildon Centre,
St Martin's Sq, Basildon
SS14 1DL









Pauline Kettle
07484 396209
c/o The Basildon Centre,
St Martin's Sq, Basildon
SS14 1DL



All Councillors can be contacted via email:
firstname.surname@members.basildon.gov.uk

For more information regarding councillors please call **01268 533333**

COUNCILLORS OF BASILDON BOROUGH 2020-2021

Frame colour	Political group	Number of seats
	Conservative	18
	Labour	15
	Independents	4
	Wickford Independents	2
	Absolute Independents	2
	Non - Aligned	1

CROUCH



Stuart Allen
01268 284225
62 The Upway,
Basildon
SS14 2JA



Terri Sargent
01268 288766
81 Lower Street,
Noak Bridge,
Basildon
SS15 4BD

WICKFORD CASTLEDON



Malcolm Buckley
01268 472586
65 Castledon
Road, Wickford
SS12 0HB



Don Morris
07960 959689
24 The Hastings,
Wickford
SS11 7EQ



Peter Holliman
07956 395818
c/o The Basildon Centre,
St Martin's Sq, Basildon
SS14 1DL



Carole Morris
01268 457488
24 The Hastings,
Wickford SS11 7EQ



Eunice Brockman
07594 216528
c/o The Basildon Centre,
St Martin's Sq, Basildon
SS14 1DL

WICKFORD NORTH



David Harrison
07305 614967
49 Alicia Avenue
Wickford
SS11 8PH



George Jeffery
07570 282997
c/o The Basildon Centre,
St Martin's Sq, Basildon
SS14 1DL

WICKFORD PARK



Adele Brown
07957 610371
99 Laindon Road
Billericay, Essex
CM12 9LG

FRYERNS



Allan Davies
01268 459285
c/o The Basildon Centre,
St Martin's Sq, Basildon
SS14 1DL



David Kirkman
07887 775083
c/o The Basildon Centre,
St Martin's Sq, Basildon
SS14 1DL

PITSEA NORTH WEST



Gavin Callaghan
01268 207793
Leader of the Council
c/o The Basildon Centre,
St Martin's Sq, Basildon
SS14 1DL



Patricia Reid
07806 804299
c/o The Basildon Centre,
St Martin's Sq, Basildon
SS14 1DL



Jack Ferguson
07803 849145
25 Langford Grove,
Basildon
SS13 1NX

VANGE



Aidan McGurran
07710 613928
c/o The Basildon Centre,
St Martin's Sq, Basildon
SS14 1DL



Melissa McGeorge
07545 237217
c/o The Basildon Centre,
St Martin's Sq, Basildon
SS14 1DL

PITSEA SOUTH EAST



Kerry Smith
01268 661812
Deputy Leader of the Council
c/o The Basildon Centre,
St Martin's Sq, Basildon
SS14 1DL



Andrew Ansell
07707 163367
c/o The Basildon Centre,
St Martin's Sq, Basildon
SS14 1DL



Luke Mackenzie
07483 276109
c/o The Basildon Centre,
St Martin's Sq, Basildon
SS14 1DL



Craig Rimmer
07535 826481
c/o The Basildon Centre,
St Martin's Sq, Basildon
SS14 1DL

Project in a box

A scheme run by Essex, BeNCH and Norfolk and Suffolk Community Rehabilitation Companies, which aims to ensure people pay back for their crimes is getting creative to ensure our communities can still benefit during the Covid-19 pandemic.

Community Payback is a requirement given by the court as part of a sentence, which involves individuals carrying out unpaid work in the community. It can range from 40 to 300 hours and has to be completed within 12 months.

As a result of the pandemic, many of the typical Community Payback projects have been suspended to ensure the safety of staff, service users and the public. The CRC turned to more innovative ways of working and have launched 'Project in a Box', which allows individuals sentenced to Community Payback to complete their unpaid work hours while working from home.

For each of the current projects, the individuals receive the materials they need to make

a wide range of products that are then donated to organisations or individuals in crisis. We also have an online shop where the products can be purchased for a small donation to enable us to purchase play equipment for Safer Places who support people fleeing domestic violence.

One of the participants said: "After a crazy and frustrating year for everyone in this world, it seemed the remaining 178 hours I did have left, were never going to get done, due to the restrictions in place. But the idea of this project and the great cause it was for, is perfect in helping offenders get their sentences done in a safe and practical way and also for me personally feels like I am doing my sentence in a constructive and positive way."

Projects completed to date include sewing facemasks, making white ribbons for domestic abuse awareness week and creating greetings cards. The next projects include syringe driver bags, premature baby bonnets.

Helping to safeguard vulnerable children

A campaign involving Safer Basildon is raising awareness of child exploitation at stations and transport networks in Basildon and across Essex. The campaign 'Operation Henderson', is sharing information about how to safeguard vulnerable children on public transport, what signs to look out for and how you can report concerns.

While many people are staying at home during the second lockdown, we know children are still using public transport to get to and from school. Traditionally the anonymity of a crowded station has made it harder to identify victims, in lockdown the lack of passengers can make it easier for young people and their exploiters to move around unchecked. So if you are out and about for work or caring purposes look out for signs of exploitation, particularly around transport hubs.

Concerns about child exploitation can be reported to the Police on 101 or anonymously via Crimestoppers on 0800 555 111. If there are concerns about suspicious activity in the train station grounds the British Transport Police text line number can also be used 61016.

For more information visit
www.escb.co.uk/parentcarer/criminal-exploitation



DID YOU KNOW?

You can report concerns about a vulnerable young person by contacting the Police on 101, Crimestoppers on 0800 555 111 or if on a train or in a station you can text British Transport Police on 61016.

SAFERBASILDON
Working together for a safer borough

How the council works

The political proportionality of the council is currently as follows:

Conservative 18

Labour 15

Independents 4

Wickford Independents 2

Absolute Independents 2

Non - Aligned 1

Basildon Council has 42 elected members representing 16 wards. The Leader of the Council is Councillor Gavin Callaghan, who is the Leader of the Labour Group. No political group has overall control of the council. The council operates a Committee System form of governance whereby decisions are made through a range of committees involving members from across political groups representing the political proportionality of the council.

Councillors are elected by thirds – meaning 14 councillors are elected in three years out of every four. The next borough council elections will be held in May 2021.

Each councillor publishes their contact details on the council's website. For details about your councillor and how to contact them go to www.basildon.gov.uk/wherellive

Decisions are made in committees and meetings of full council. Councillors are currently attending meetings remotely. Meetings are streamed live on the council's YouTube channel and recordings are available to watch afterwards. Agendas and minutes for these meetings are published on the council's website and most meetings are broadcast live. Go to www.basildon.gov.uk/meetings

Future Committee dates (all meetings start at 7pm unless stated otherwise)

Policy and Resources

Thursday 3 December

Thursday 28 January 2021

Full Council 7.30pm

Thursday 10 December

Thursday 25 February 2021

Planning

Tuesday 15 December

Economy Development and Recovery

Tuesday 8 December

Wednesday 6 January 2021

Licensing

Wednesday 16 December

Local Government

Reorganisation and Transition

Thursday 17 December

Thursday 4 February 2021

Neighbourhoods and Public Spaces

Wednesday 20 January 2021

Strategic Planning and Infrastructure Committee

Thursday 21 January 2021

Town Centre Revival

Tuesday 26 January 2021

Tuesday 9 March 2021

Audit and Risk

Wednesday 27 January 2021

Take part in our Public Spaces Protection order survey

We are encouraging you to complete a short survey in order to determine the level of support for a potential Public Spaces Protection Order (PSPO) to cover parks, open spaces and town centres across the borough in a bid to tackle Anti-Social Behaviour (ASB).

PSPOs were introduced in the Anti-Social Behaviour Crime & Policing Act 2014. They aim to deal with particular nuisance or problems that have a negative impact on the local community's quality of life by imposing conditions on the use of that area. This can include anything from littering to the anti-social use of quads or mopeds. Failure to comply with the conditions is a criminal offence.

To complete the survey just visit

www.basildon.gov.uk/publicconsultations

The survey closes at midnight on Friday 18 December.



Share your messages of remembrance, reflection or recognition

Everyone has been affected by Covid-19 in some way. Sadly, some have lost loved ones due to this virus. Others have lost loved ones this year and have been unable to say their goodbyes in the way they would have wished.

We have created an online book for people to publish either their message of remembrance of a loved one, reflections on the pandemic or in recognition of the work of our key workers and volunteers.

Messages can be submitted individually, or as a representative of an organisation.

To leave your message or to read the heartfelt messages of others, visit:
www5.basildon.gov.uk/covid19



WE ARE OPEN AND COVID-SECURE

We wish to reassure our clients that our four offices in Basildon, Rayleigh, South Woodham Ferrers and Thurrock are open for business. We have implemented rigorous Covid-secure measures to ensure the safety of staff and clients alike.

While we are able to offer many of our services remotely at present, we understand that there are times when it is important for you to meet our specialist lawyers in person.

Accordingly, we continue to offer pre-booked appointments and ask that visitors wear a face covering and use the sanitisers upon entry. Together, we are doing all we can to limit the spread of the virus.



Moving forward together | www.palmerslaw.co.uk

Basildon
01268 240000

Rayleigh
01268 988488

South Woodham Ferrers
01245 322111

Thurrock
01375 484444

Working together to help people in Basildon

Do you have an idea that could help/benefit/support an older person, a person with disabilities or improve someone's mental health?

Do you need help to turn your idea into an enterprise or small community venture?

Are you already helping people and would like to do more?



Community Micro-enterprise

All Community Micro-enterprises aim to make a difference to the lives of local people. They:

- have 8 or fewer full-time staff or volunteers
- are independent of any larger organisation
- are set up in many different and creative ways such as: sole trader, partnership, small business, social enterprise, charity or voluntary organisation.

Support from the project

Essex County Council runs a development programme which can:

- offer you a friendly and supportive point of contact to explore ideas
- support you to develop your community enterprise
- give you practical information on regulation, training and opportunities in the health and social care sector
- direct you to other organisations who can help.

Community Micro-enterprise project in Basildon

This is a new and exciting project delivered by Essex County Council in partnership with Community Catalysts. The 2-year pilot aims to stimulate the development and growth of community micro-enterprises that provide a wide range of help and support for older people, people with disabilities or to improve someone's mental health, thus increasing choice for people who have eligible needs and pay for their care via a direct payment or independently of the council.

Get in touch

Call Catherine Apps on 07557 314 925
or email at micro.enterprise@essex.gov.uk for more information



TENANTS/LANDLORDS LET'S WORK TOGETHER

Do you live in or near a shared home/HMO? Tell us!

What we want to know about:

- All homes shared by 3 or more people as 2 or more households
- All of these must be registered with us as a House in Multiple Occupation (HMO)
- All HMOs containing 5 or more people living in 2 or more households require a licence from us.

Did you know?

Your landlord may have to repay rent if they have an HMO that should be licensed but isn't. They cannot evict you if the HMO is unlicensed but should be.

Therefore if you think you own, live in or near, an HMO tell us at www.basildon.gov.uk/hmo



HM Government

NHS

**Washing my
hands helps
protect me.**

And you.

Regular handwashing
wipes away the virus.

STAY ALERT
▼
**CONTROL
THE VIRUS**
▼
SAVE LIVES